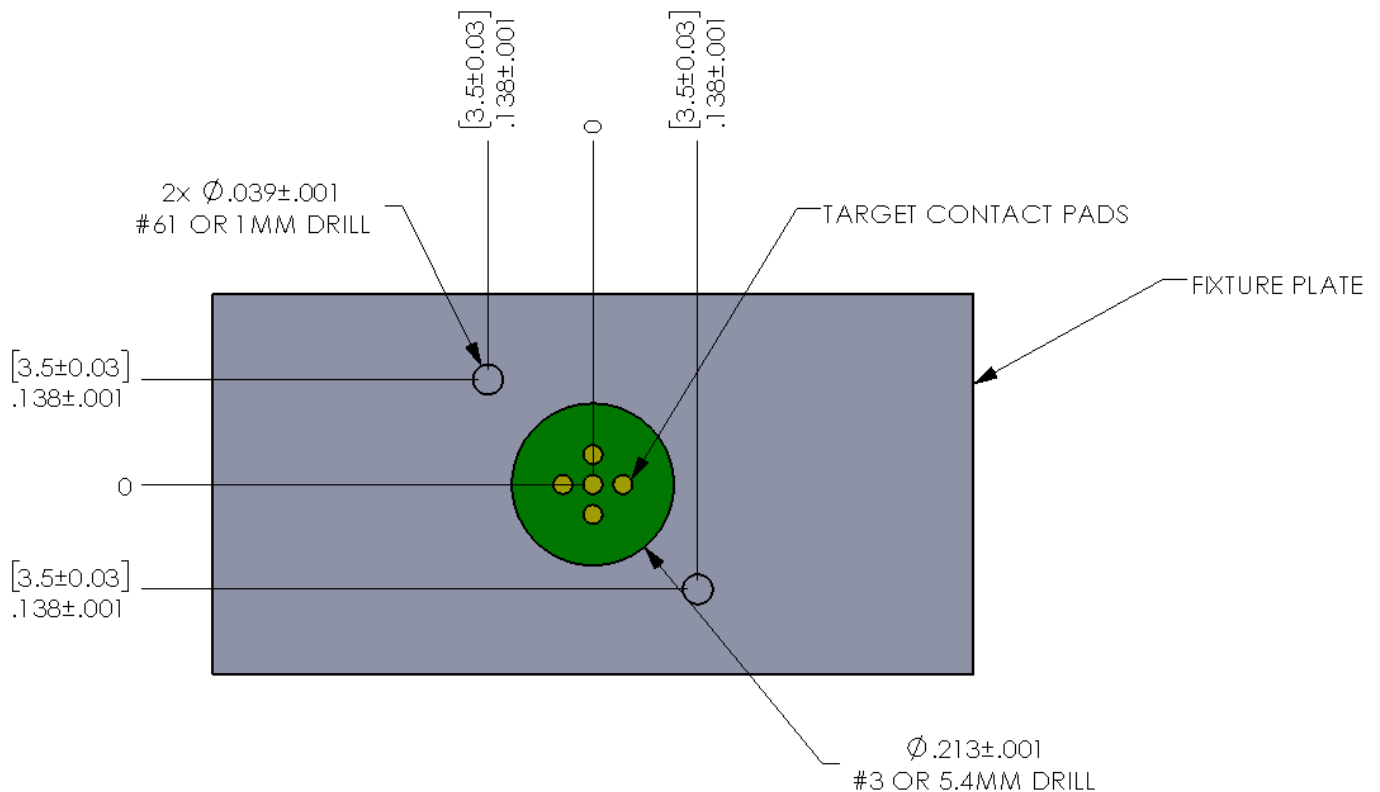
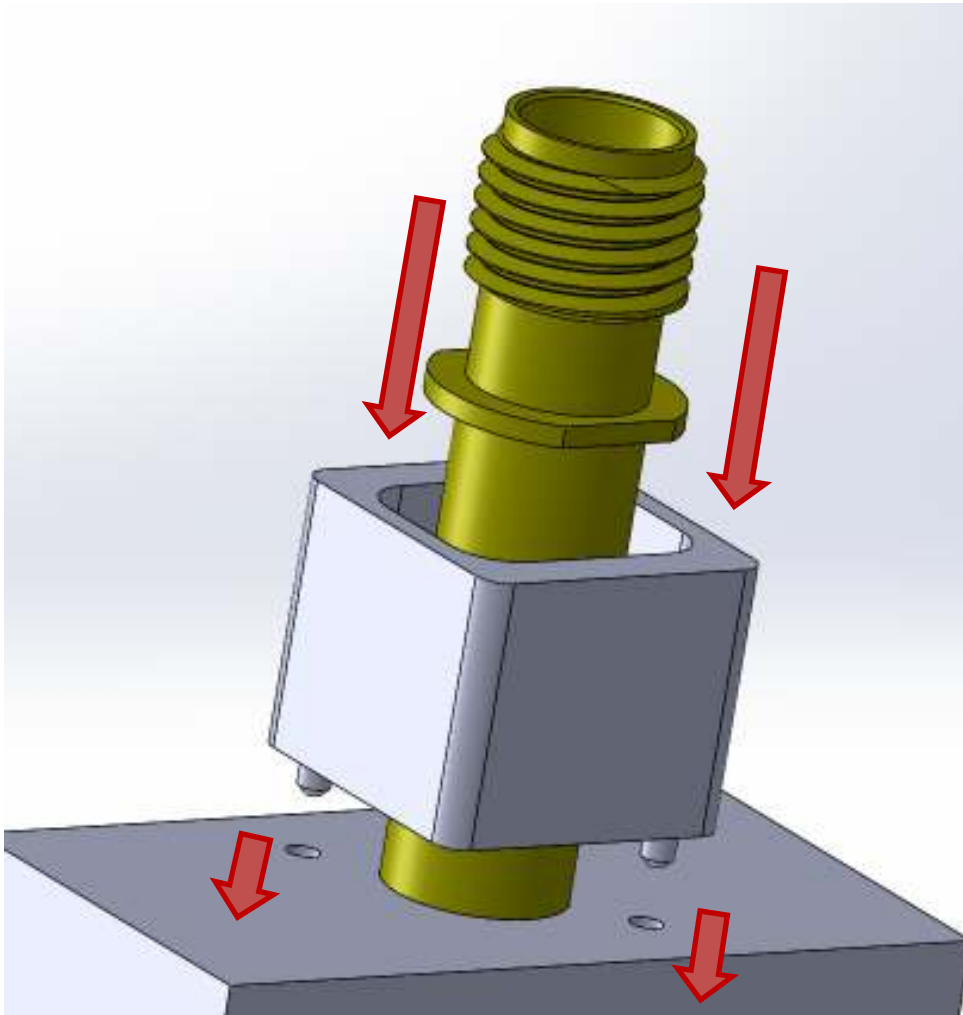


## CSP-30TS-011 Mounting Instructions:

1. The CSP-30TS-011 SMA Connector Probe can be mounted into a G10 sheet fixture plate .250" or larger thickness.
2. Drill the following hole pattern ( .039" and .213" hole) relative to the target contact pads.



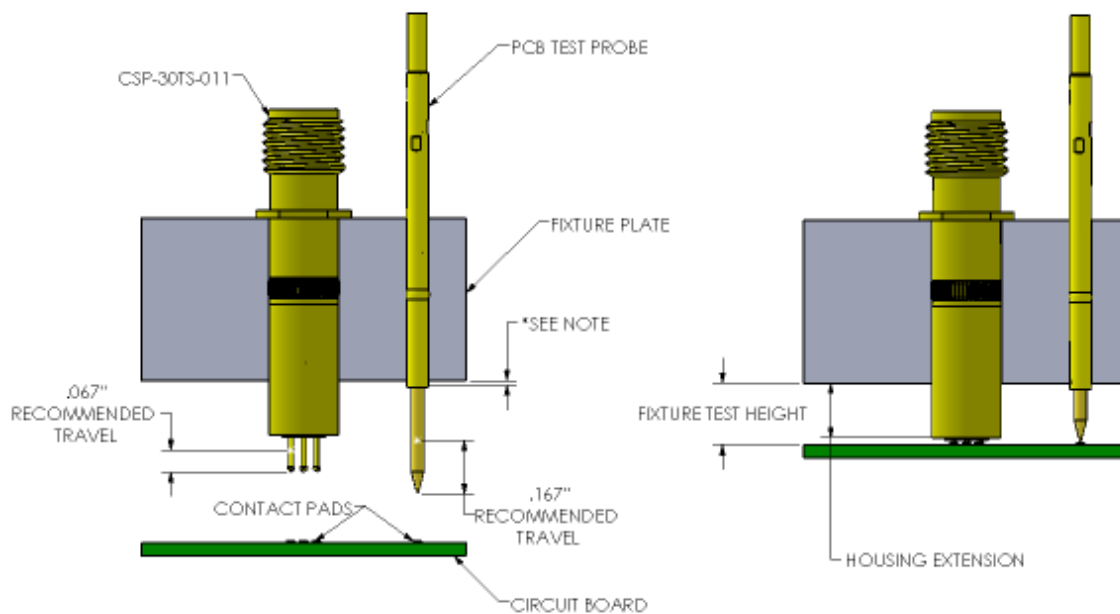
3. Use guide tool CIT-30-0 to press CSP-30TS-011 into the mounting hole with the housing extension equal to:  
**HOUSING EXTENSION = FIXTURE TEST HEIGHT - .015"**



**Note: Guide tool CIT-30-0 is provided with each CSP-30TS-011**

4. At full compression,

$$\text{HOUSING EXTENSION} = \text{FIXTURE TEST HEIGHT} - .015''$$



5. The 7/32" or 1/4" wrench flats may be used to connect the SMA interface cable

**NOTE:** CSP-30TS-011 coaxial probes are compatible with other ECT PCB test probes such as POGO and LFRE. Mount probes so that both CSP-30 and PCB test probes reach recommended travel at the target fixture deflection.